



# ARTICOLO



MATERIALS & CARE GUIDE

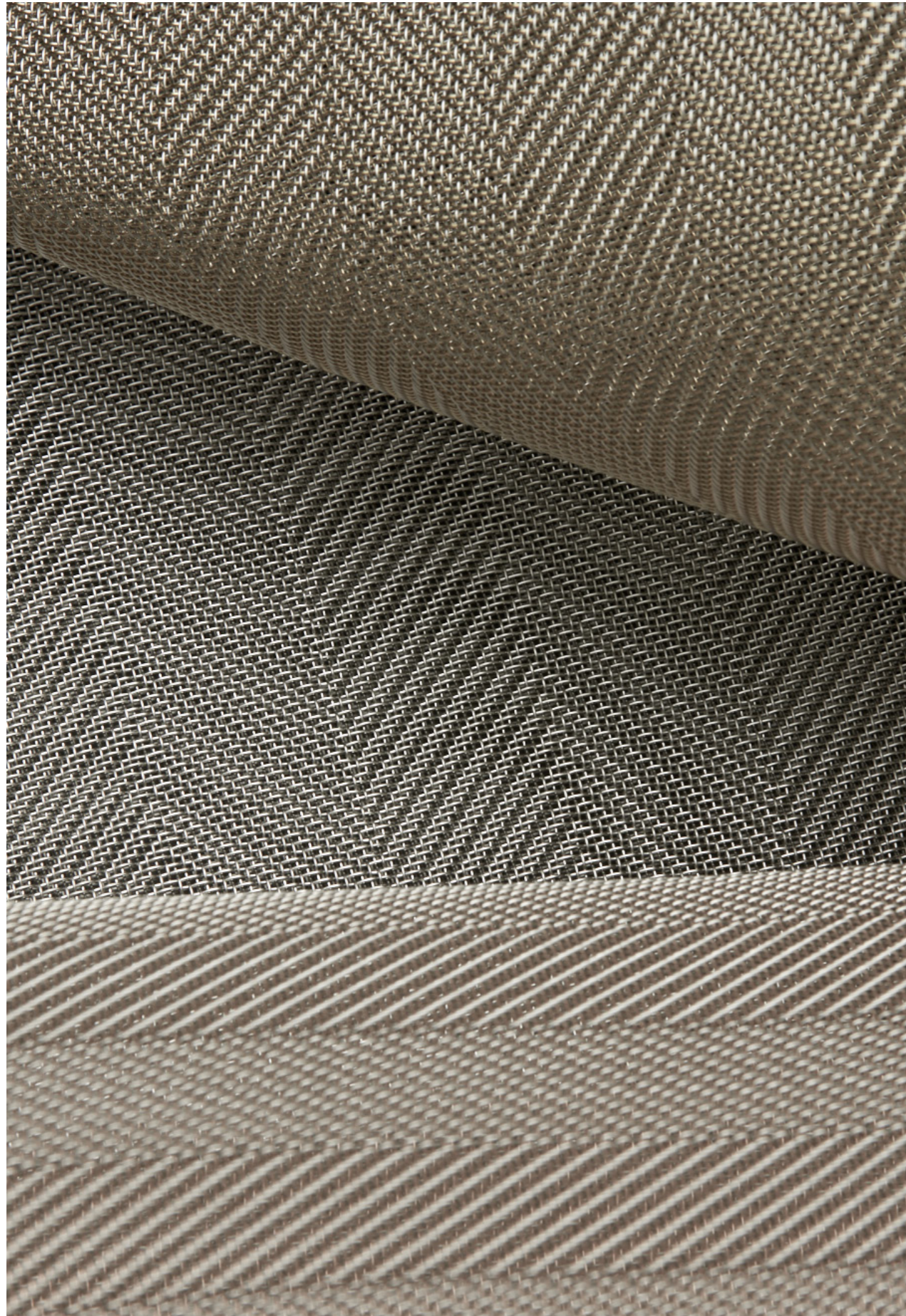




#### LIGHTING FINISHES

We collaborate with a close network of craftsmen and women whose skill and talent we deeply respect. Our love for the artisanal nature of materiality in its different forms from the nuances of mouth-blown glass to solid metals, ceramics, stone and leather, is reflected in the human element of generational artisans whose value cannot be replicated through mass production.

Together we uphold ideas, exploration, creativity and curiosity as a collective, with a unified vision that ensures each finished piece is testament to the many minds and hands that have interpreted Nicci's unique design language.



GLASS SHADES



Clear



Snow



Eclipse Clear & White



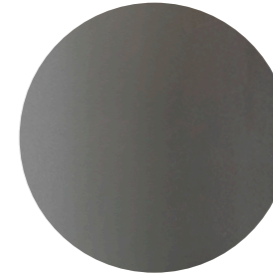
Cast Glass



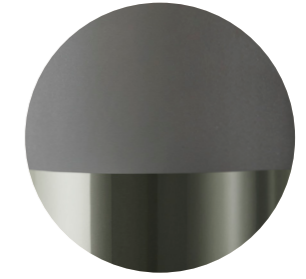
Ovolo White & Clear



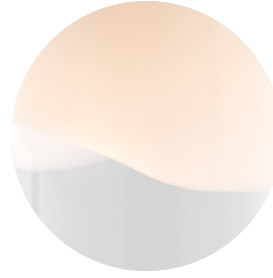
Grey



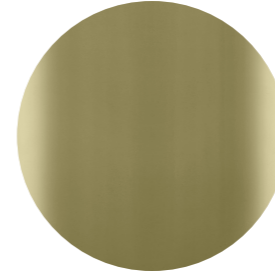
Grey Frost



2/3 Grey Frost



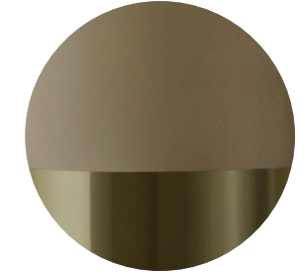
Moni White & Clear



Smoke



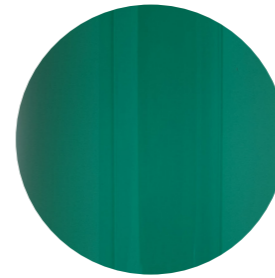
Smoke Frost



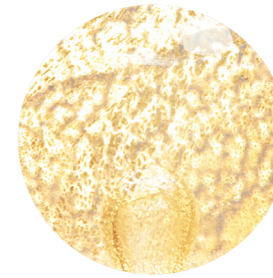
2/3 Smoke Frost



Fizi



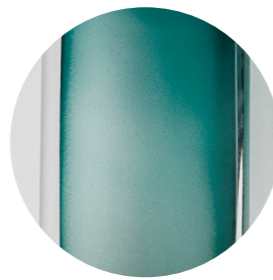
Drunken Emerald



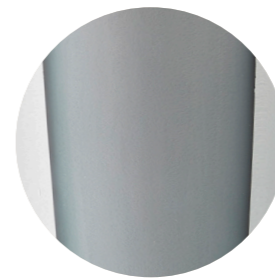
Oro



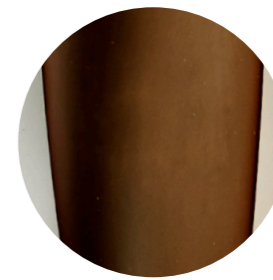
Ice Cubo



Drunken Emerald Slab



Grey Slab



Tea Slab



Clear Fluted



STONE SHADES



Alabaster



Travertine (Unhoned)

VENEER SHADES



Pale



Dark



Walnut

METAL FINISHES



Brass



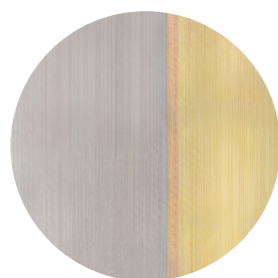
Bronze



Satin Nickel

*Note: As Bronze is a hand applied finish, the depth of colour will vary*

SEAM METAL FINISHES



Stainless Steel/Brass



Brass

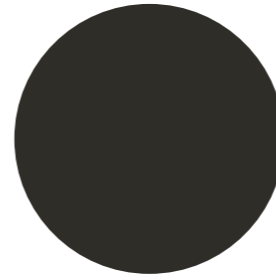
*Note: Seam metal is finished with an orbital sand.*

PLATED METAL FINISHES



Electroplate Black

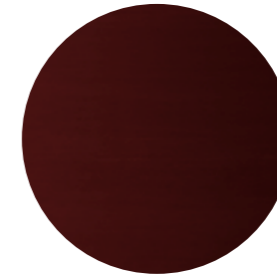
POWDER COATED FINISHES



Black Powder Coat



White Powder Coat

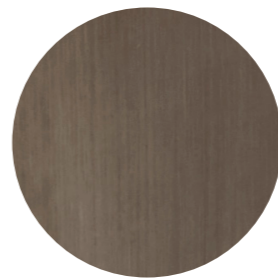


Burgundy Powder Coat

ANODISED FINISHES



Anodised Black

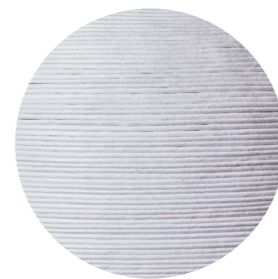


Anodised Bronze

INDI WEAVE SHADES



Black



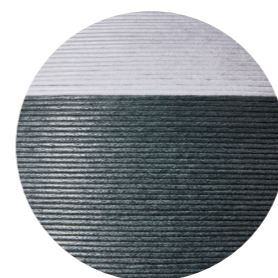
White



Natural



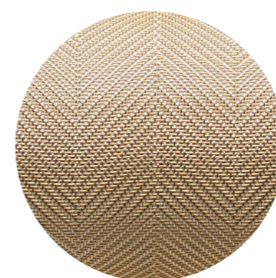
Sand



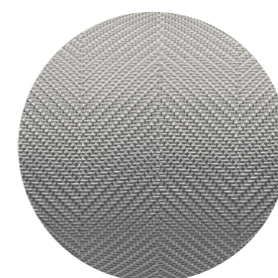
Teal

*Note: All colours available individually, or in a 2/3 split combination. See left (Sand and Teal) for split reference.*

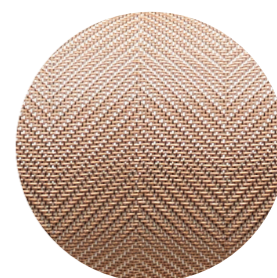
MESH INLAYS



Brass Mesh Inlay



Silver Mesh Inlay



Rose Gold Mesh Inlay

STONE DETAIL



Marble



Travertine (Honed)

LINEN



Bone Linen

*Note: Custom fabric colours available upon request*

LEATHER INLAYS



Latte



Titanium



Nougat



Pecan



Black

FLEX CORDS



Black



White



Natural Linen



Mid Grey Linen



Black & White

FLEX CORD DETAIL



## CARE & MAINTENANCE

### GENERAL GUIDELINES

#### SAFETY FIRST

Always switch off power before cleaning and allow the fixture to cool.

#### HANDLING WITH CARE

Use clean hands or cotton gloves when touching fittings to avoid fingerprints or surface marks.

#### SHADES & FIXTURES

If a shade must be removed, or maintenance involves more than surface cleaning, please contact Articolo Customer Support for guidance.

#### CLEANING PRACTICE

Use a soft, clean cloth to gently remove dust and surface marks.

#### REFRAIN FROM HARSH PRODUCTS

Strong cleaners, solvents, and abrasives can cause damage and should not be used.

### METAL FINISHES

#### BRASS & BRONZE WITH ELECTROPHORETIC CLEARCOAT

Wipe gently with a clean, soft cloth to maintain clarity and sheen.

#### BRONZE (WAXED)

To maintain the natural lustre, apply a thin layer of non-abrasive wax (e.g. Renaissance Wax) occasionally, using a soft cloth.

Buff lightly as required.

### METAL PLATED FINISHES

#### ELECTROPLATE BLACK & SATIN NICKEL

Carefully wipe with a clean cloth to remove dust and marks.

Consistent gentle cleaning preserves the plated surface.

### POWDER COATED FINISHES

#### BLACK & WHITE

Clean regularly with a soft cloth to retain finish quality.

Gentle attention prevents surface dullness.

### ANODISED FINISHES

Wipe with a clean cloth to maintain appearance.

In marine environments, clean frequently to avoid salt build-up, as salt is detrimental to the finish over time.

### OTHER MATERIALS

#### GLASS

Use a clean white cloth to avoid colour transfer.

Clear, coloured, or frosted glass: Wipe gently to remove marks and restore clarity.

For persistent blemishes, rubbing alcohol (eg. Isocol) may be used. Avoid scrubbing.

#### STONE

Wipe gently with a soft cloth to remove dust and marks.

#### VENEER

Dust regularly with a dry microfiber cloth.

For lighting cleaning, wipe gently with a soft cloth to remove dust and marks, always follow the grain direction.

#### APPLIED FINISH

For shades or surfaces finished on site with specialist materials (e.g. Venetian plaster), please refer directly to the manufacturer or installer for care instructions, as Articolo cannot advise or warrant these finishes.

#### LEATHER

Wipe gently with a dry cloth. For spills, blot immediately using water-based cleaners only. Avoid saddle soap, oils, or home remedies, which may damage the leather. Keep away from sunlight and moisture.

#### MESH

Maintain with a light dusting using a soft cloth or duster.

#### INDI WEAVE

Dust gently with a soft cloth or duster.

### ARTISANALLY ARTICOLO

Each Articolo glass shade is hand-crafted by master artisans. Colours may vary subtly from website images. You may also see the maker's touch in the small bubbles and striations which are inherent to mouth-blown glass.

Similarly, our metal finishes—particularly hand-rubbed bronze—are crafted by hand and may vary in tone from light to dark.

With these distinctions in mind, please know that we take every care to match glass colours and metal finishes for each order.

### FURTHER ASSISTANCE

For more stubborn surface blemishes or care beyond the guidance above, please contact Articolo Customer Support for tailored advice.

### SUPPORT

Articolo is committed to artisanal craft and enduring quality. When our care and maintenance guidelines are followed, your piece is designed to retain its finish and performance for many years of use.

For further care, maintenance, or warranty support, please contact us:

Australia

T +61 (3) 8595 8011

E [customersupport@articolostudios.com](mailto:customersupport@articolostudios.com)

North America

T +1 (646) 971 0065

E [customersupport@articolostudios.com](mailto:customersupport@articolostudios.com)

A 'S

ARTICOLOSTUDIOS.COM

MELBOURNE  
AUSTRALIA

18 Willis Street  
Richmond, VIC 3121  
+61 (3) 8595 8011

NEW YORK  
UNITED STATES

1123 Broadway, Suite 201  
New York, NY 10010  
+1 (646) 971 0065

SALES@ARTICOLOSTUDIOS.COM

